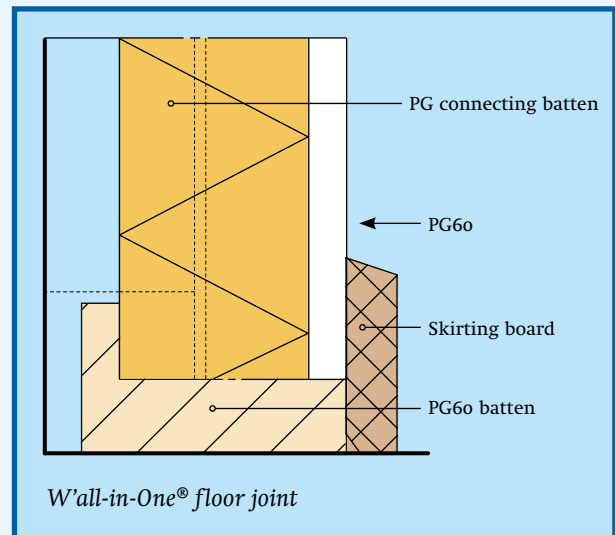


W'all-in-One® basic

As well as W'all-in-One® panels with rebates there are also W'all-in-One® panels with straight, unprofiled edges, the W'all-in-One basic panels. They are attached directly to the wall with FAAYFOAM - a new type of assembly foam - without an air cavity. 5 mechanical attachment points should be installed per sheet if the surface is suspended, sloping or is very wet.

Four versions

Four versions of W'all-in-One® are available: PG40, 50, 60 and 70. The numbers stand for the thickness in mm of the panels (other thicknesses are available on request). The thermal insulation of the PG60 is Rc 2.65, Rc 3.05 for the PG70. With these values the panels comply with the Building Decree.



Technical details W'all-in-One® wall

Type	PG40 system	PG50 system	PG60 system	PG70 system
Thickness of element incl. plaster board (mm)	40*	50*	60*	70*
Width (mm)	600	600	600	600
Length (mm)	2600/3000	2600/3000	2600/3000	2600/3000
Weight (kg/m ²) incl. plaster board	8,8	8,95	9,1	9,4
Rd (m ² ·K/W))	1,33	1,77	2,21	2,65
Rc incl. air cavity + brick wall	1,41	2,25	2,65	3,05
U-value (W/m ² ·K) 1/Rc+0.17	0,63	0,41	0,35	0,31
Fire class (in combination with 9,5 mm plaster board)	B (i.c.w. plaster board)	B (i.c.w. plaster board)	B (i.c.w. plaster board)	B (i.c.w. plaster board)
Fire class of only the foam sheet	E	E	E	E
Fire-resistance	≤ 20 min.	≤ 20 min.	≤ 20 min.	≤ 20 min.
Smoke number class	S1	S1	S1	S1
Drip class of PIR foam	do	do	do	do
SBI (single burn item of complete system)	BS1do	BS1do	BS1do	BS1do
Sound-proofing	improvement ca. 5 dB	improvement ca. 5 dB	improvement ca. 5 dB	improvement ca. 5 dB
Shape retention	yes	yes	yes	yes
Dimensional stability of PIR	DS(th)8	DS(th)8	DS(th)8	DS(th)8
Moisture sensitivity	no	no	no	no

* The thicknesses indicated are for stock articles, other thicknesses on request.





Thermally-insulating retention wall system

3
b

W'all-in-One[®], with many built-in advantages:

- maximum heat insulation, minimum thickness
- constant high thermal return
- unaffected by damp
- no thermal bridge, no heat leakage
- complies with Building Decree requirements
- any finish possible
- attractively priced



W'all-in-One¹



W'all-in-One® is a new, high quality thermally insulating retention wall system that can be finished in all the usual ways. W'all-in-One® is the result of good teamwork between system wall developer Faay Vianen B.V. and insulation specialist EcoTherm. W'all-in-One® is therefore rightfully a retention wall system with many 'built-in' advantages!

W'all-in-One

The W'all-in-One® retention wall delivers a high return per m² with a minimal thickness. This is because the HR-isolatie® has a high degree of insulation even in small thicknesses. With as extra advantage: a space saving of 50% (!) in comparison with a traditional retention wall on the basis of rock wool (with a similar degree of insulation). W'all-in-One® reaches Rc 2.65 at a thickness of 60 mm. At 70 mm the Rc is as much as 3.05.

Another advantage: the PIR sheet has a vapour-retarding foil layer on both sides. That is useful because mistakes are often made when it is installed in construction. This is not a problem thanks to the W'all-in-One® system. The Rc value of the whole construction is increased by 0.57 due to the reflective working of the foil. Moreover W'all-in-One® is light-weight, durable and recyclable. W'all-in-One® has KOMO certificate, no. 20196/09.

Sample set-up of W'all-in-One® wall

® is faster in 5 ways!

The W'all-in-One® panels stand on wooden profiles and against cavity battens at the top. Thanks to the special connecting/assembly strips and the lengthwise rebates on the panels you are able to install the W'all-in-One® wall in a trice.

No thermal bridge, no heat leakage

The assembly profiles are fixed to the rear construction with counter-sunk screws (no thermal bridge!). Slide in panel, screw profile tight, slide in panel, and so on. The W'all-in-One® panels themselves do not need to be screwed down! Moreover the assembly profiles connect the panels without thermal leaks. You are able to fill-insulate quicker and qualitatively more accurately with W'all-in-One®!

All of the above ensure that there are considerably less labour tasks. After all:

- application of vapour-permeable foil between insulation material and existing wall
- application of vapour-retarding foil between insulation and plasterboard finish
- separate measurement and application of insulation material
- separate measurement and attachment of final lining
- skimming screw holes in the final lining is not necessary! **In short, you are able to fill-insulate quicker and qualitatively more accurately in 5 ways with W'all-in-One®!**

